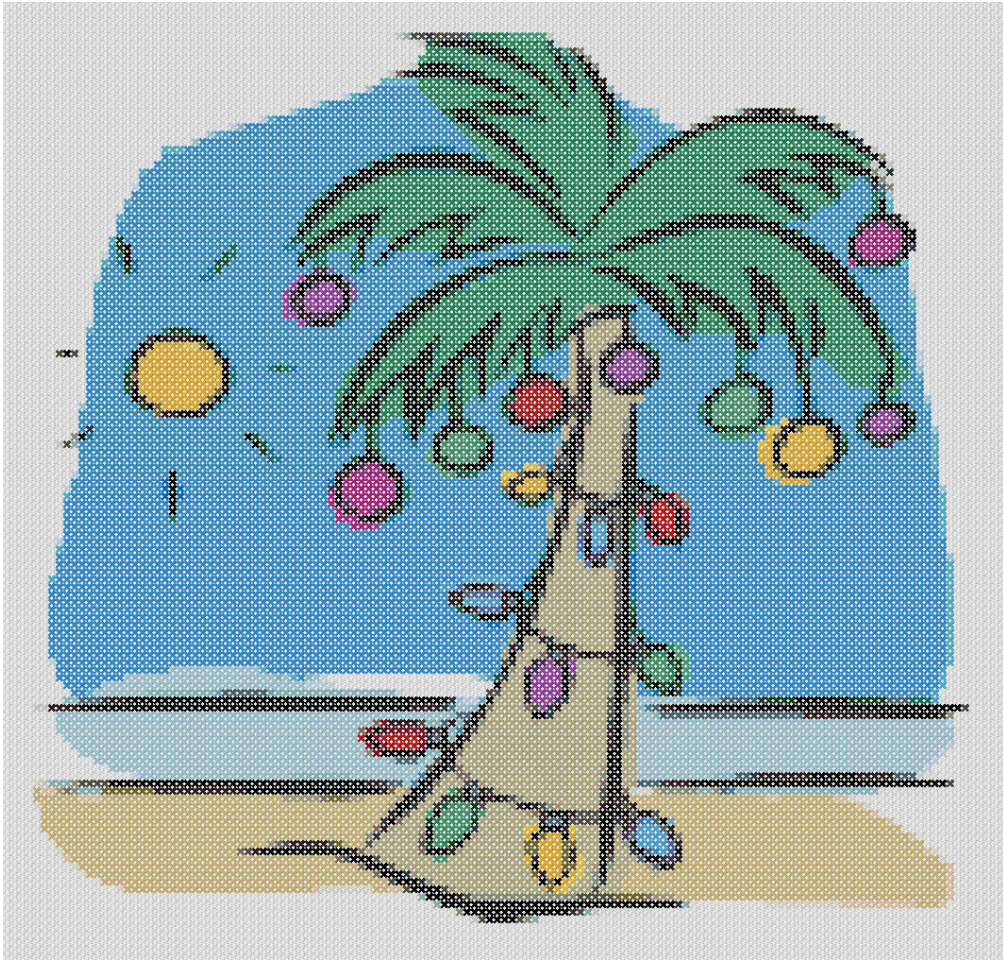


Christmas Palm Tree

Copyright (C) 2011 AltogetherChristmas.com



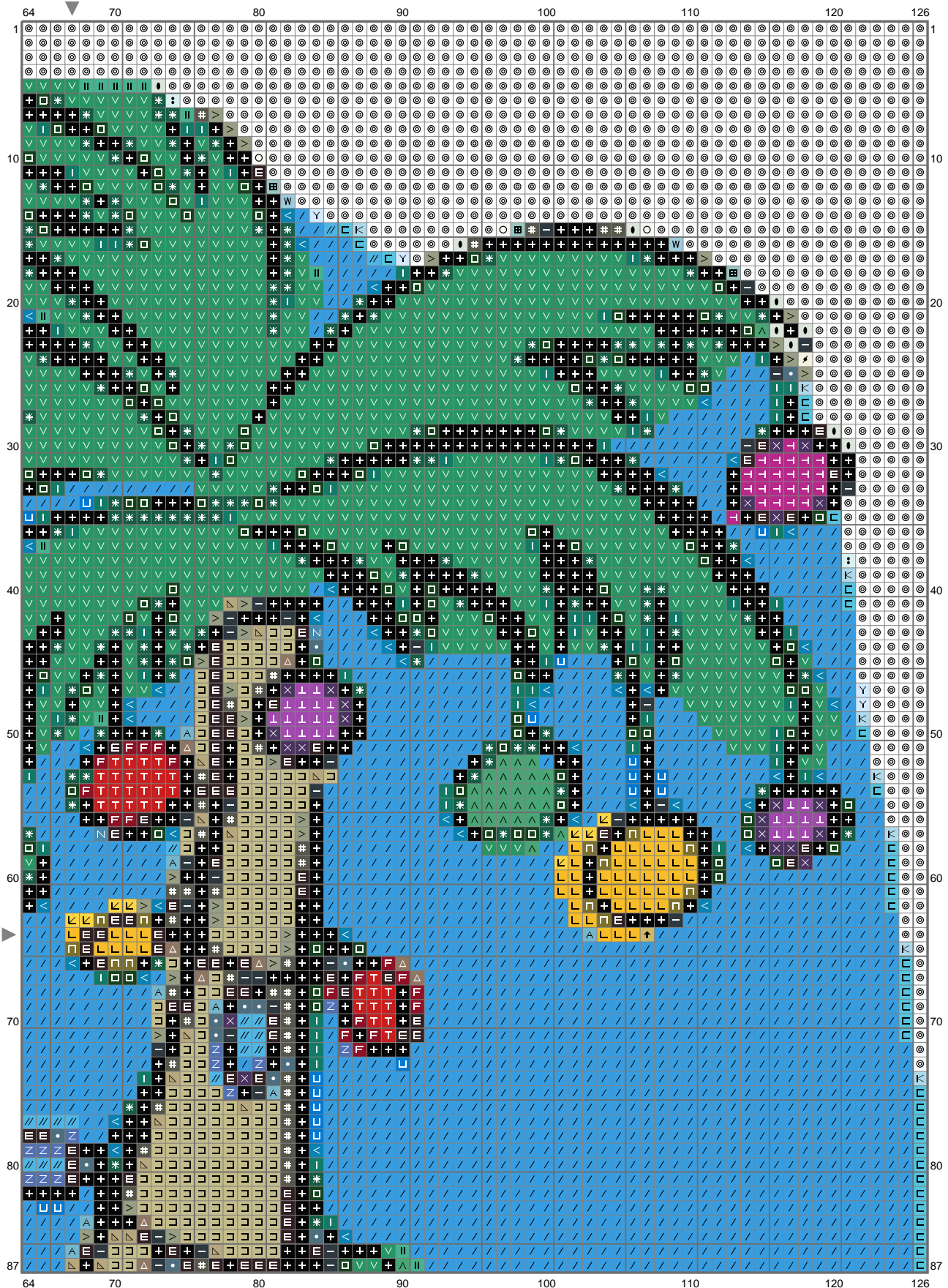
Christmas Palm Tree

Copyright (C) 2011 AltogetherChristmas.com



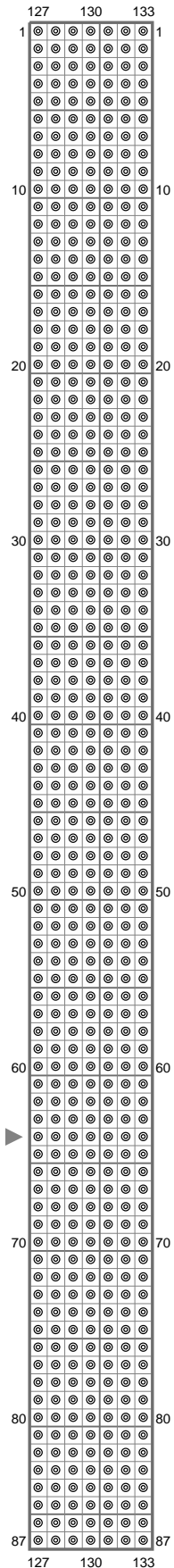
Christmas Palm Tree

Copyright (C) 2011 AltogetherChristmas.com



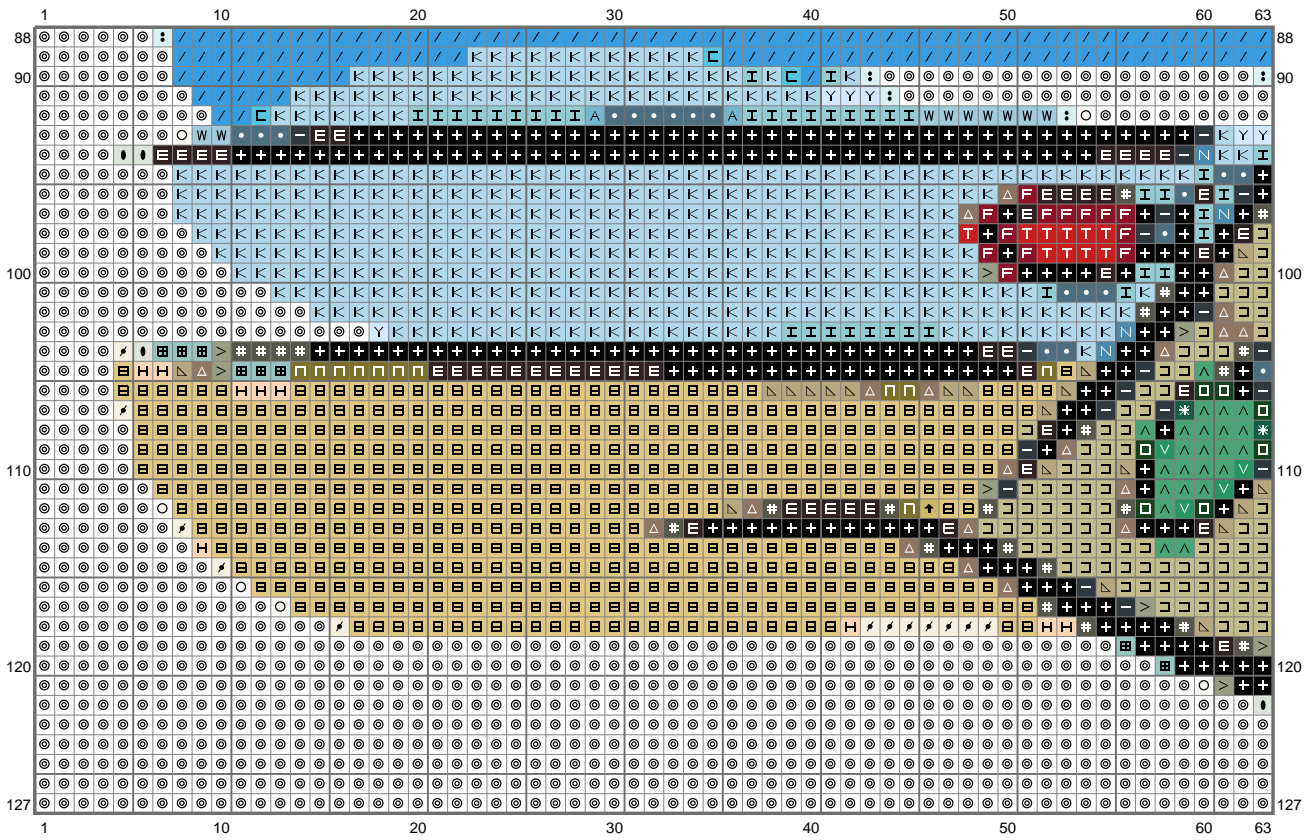
Christmas Palm Tree

Copyright (C) 2011 AltogetherChristmas.com



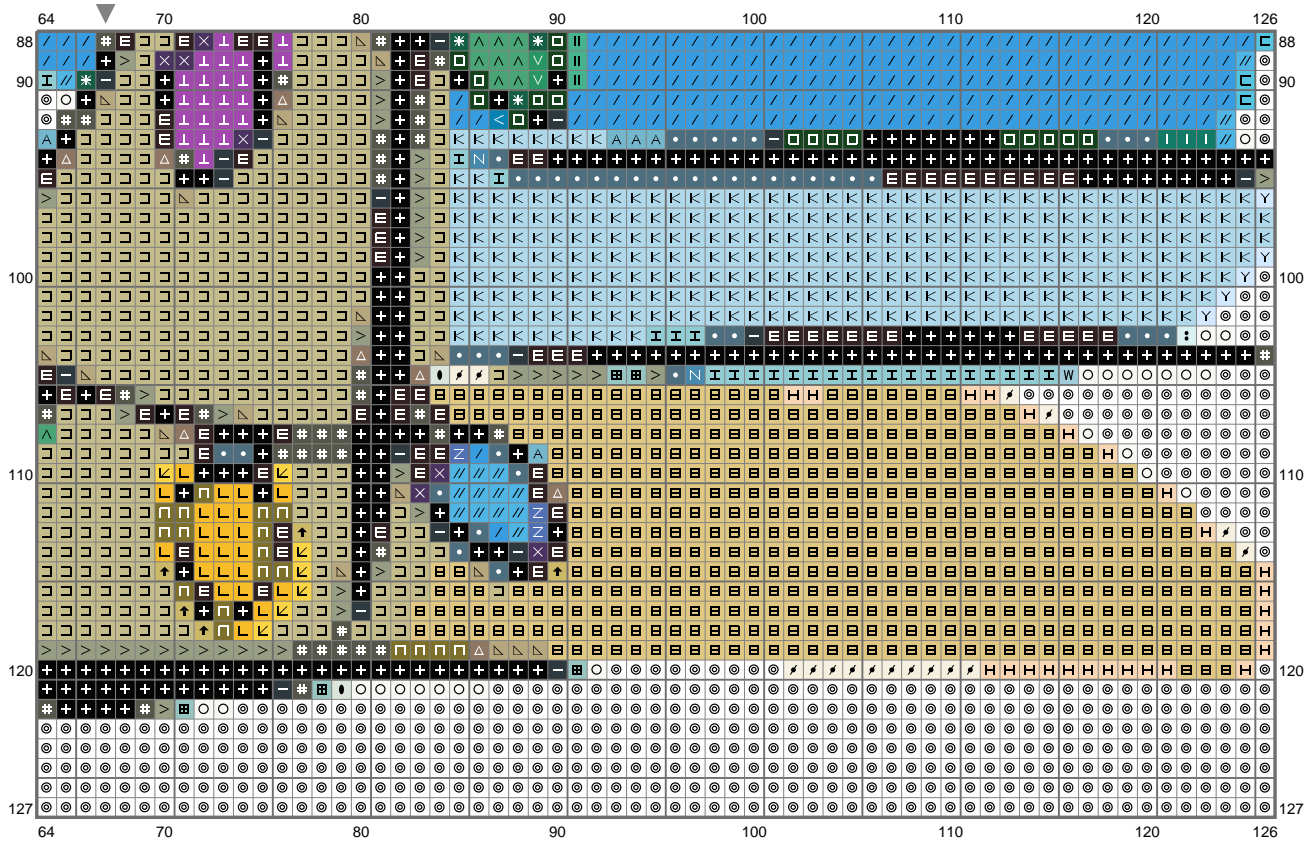
Christmas Palm Tree

Copyright (C) 2011 AltogetherChristmas.com



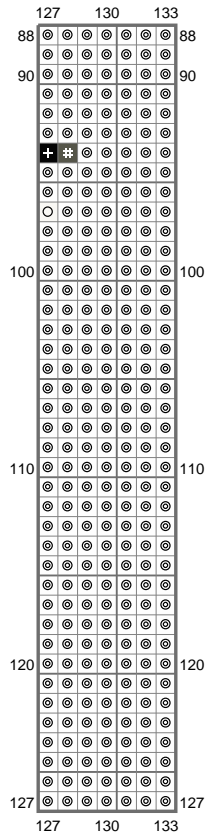
Christmas Palm Tree

Copyright (C) 2011 AltogetherChristmas.com



Christmas Palm Tree

Copyright (C) 2011 AltogetherChristmas.com



Christmas Palm Tree

Copyright (C) 2011 AltogetherChristmas.com

Stitch Count: 133w x 127h
 Finished Size: 24.13 cm x 23.04 cm (28 ct./inch)
 Cloth: Aida
 Cloth's Color: White
 # of colors: 44 Colors

Color Table (DMC)

Cross Stitch

	310	(1366 ct)		162	(21 ct)
	939	(231 ct)		3072	(20 ct)
	890	(207 ct)		3841	(13 ct)
	500	(78 ct)		746	(29 ct)
	336	(42 ct)		3865	(39 ct)
	699	(252 ct)		B5200	(4901 ct)
	991	(138 ct)			
	3362	(115 ct)			
	930	(79 ct)			
	911	(1249 ct)			
	912	(83 ct)			
	3851	(18 ct)			
	3844	(88 ct)			
	995	(36 ct)			
	996	(4633 ct)			
	825	(22 ct)			
	3760	(8 ct)			
	3845	(41 ct)			
	518	(15 ct)			
	3846	(62 ct)			
	816	(31 ct)			
	817	(41 ct)			
	3837	(73 ct)			
	718	(66 ct)			
	730	(49 ct)			
	3790	(38 ct)			
	522	(80 ct)			
	372	(53 ct)			
	972	(153 ct)			
	444	(17 ct)			
	734	(7 ct)			
	3013	(663 ct)			
	598	(18 ct)			
	834	(957 ct)			
	738	(34 ct)			
	3766	(64 ct)			
	827	(749 ct)			
	519	(12 ct)			